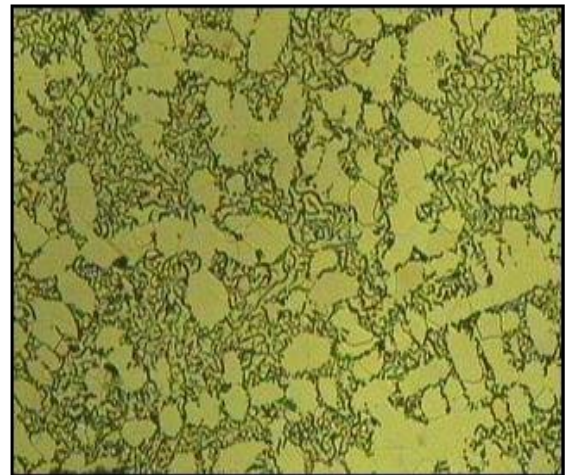
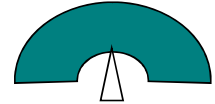




Lamellar Graphite(材料) : JH-F9 (MTV)

Analysis (化学成份)		
%	Target (标准)	Range (范围)
C(碳)	3.57	±0.08
Si (硅)	2.00	±0.10
Mn (锰)	0.60	±0.10
P (磷)	<0.20	-
S (硫)	0.04	±0.02
Cr (铬)	<0.20	-
Ni (镍)	<0.50	-
Mo (钼)	0.53	±0.08
V (钒)	0.12	±0.03
Ti (钛)	0.22	±0.03
Cu (铜)	<0.50	-
Ceq (碳当量)	4.23	±0.07

Structure X100



100倍

石墨呈A/D型, 石长为6~8级

基体为铁素体+珠光体

铁素体>85%, 珠光体<15%

Hardness (硬度) HBW 10/3000	
Target (标准)	145
Range (范围)	± 10

Graphite	Target	Matrix	Target
Shape	I	Ferrite	>85%
Distribution	A/D	Pearlite	<15%
Size	6~8		

批准:



审核:



制作: 苏秋君

日期: 2018/3/31